

SAFETY PROCEDURES

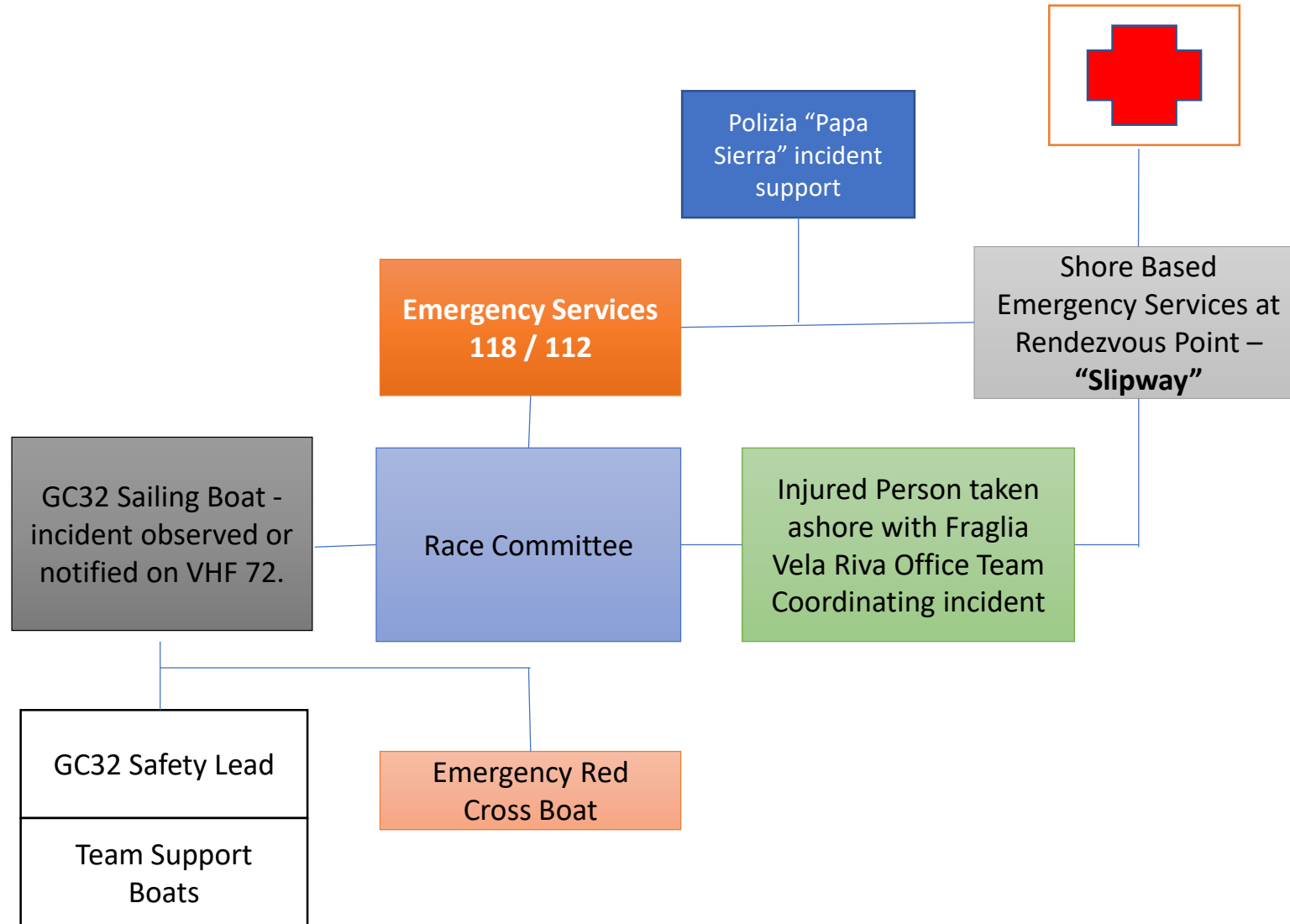


**International
Class Association**

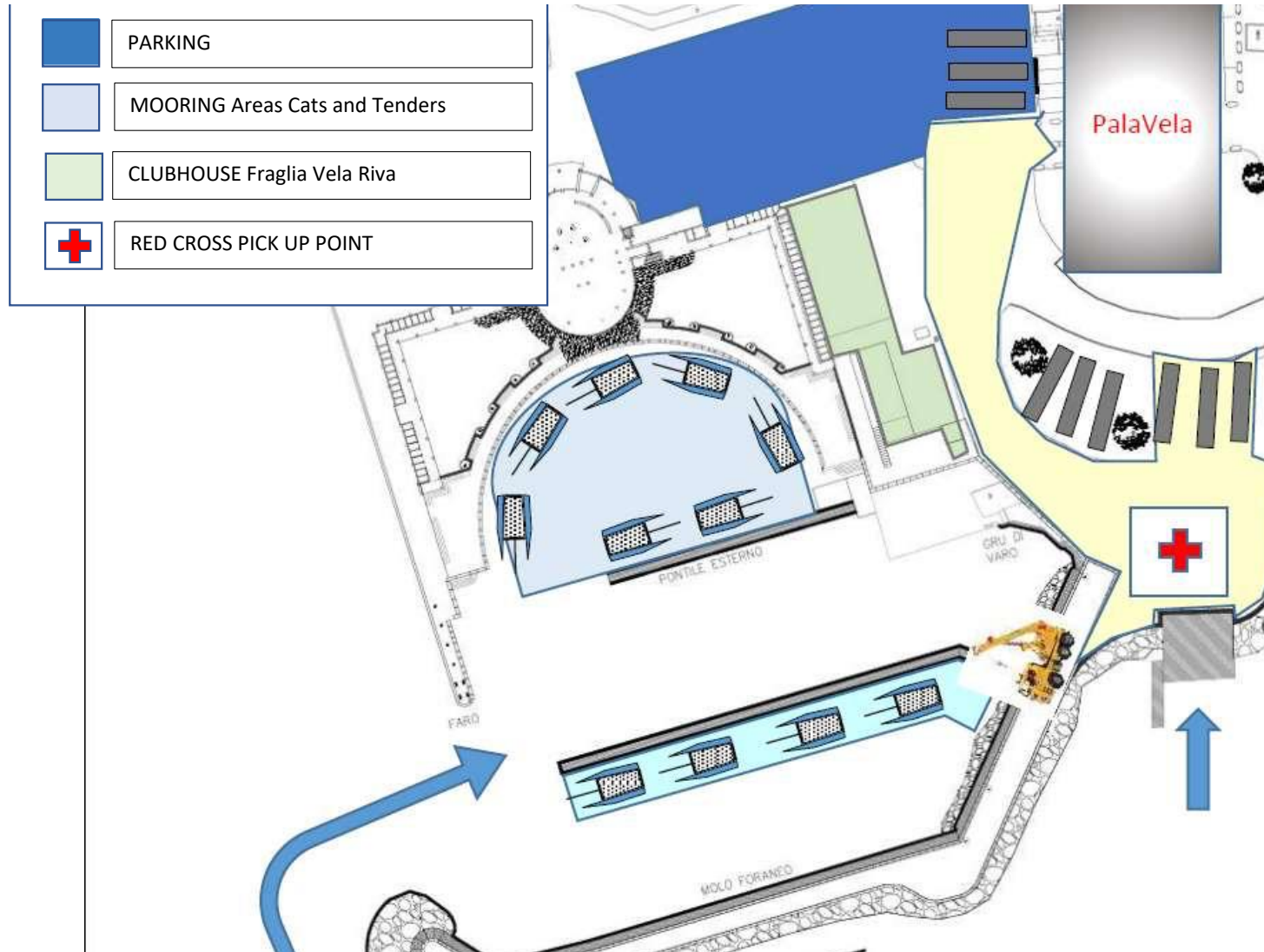
Communications

- All Communications should be made in English on VHF Channel 72.
- Alert the Race Committee (RC) immediately – first call. RC then will respond and assist.
- Information – “Boat Name, Position on Race Area, Type of Incident, Injured / Person or not, Level of damage.”
- Do not use name of Injured Person(s) (IP). Use “IP”
- If you hear an incident reported - Keep the VHF channel free from unnecessary chat!

Emergency Plan / GC32 WORLDS



Pick Up Point / GC32 WORLDS



Incidents

Incident Type

- Technical / Collision
- Man Overboard
- Human injury
- Capsizing
- Capsizing with crew trapped, with or without injured person.

No Media boats are allowed near the Boat whilst an incident is being responded too.

Technical Incident

- Boat or Team Support Boat call RC on VHF 72.
- The RC assists with coordinating resources, as required.
- The RC considers the Abandonment of the race: depending on location, nature of the incident.
- Does the boat need help or not?
 - If help is needed, the Course Safety RIB(s) can assist.
 - If not, the Teams' Support Boat will manage the problem alone. At the end of the incident the Boat or the Teams' Support Boat should inform the RC.

Man Overboard

- Boat, Umpire or Team Support Boat call RC on VHF 72 "Man Overboard" 3x times, then with details. E.g. Boat name, After the first rounding mark "X", 20-30 meters from boat "X".
- The RC may consider the Abandonment of the race: depending on location & nature of the incident.
- Umpire RIBs, Course Safety Leader(s) or the closest Team Support RIB available then picks up the MOB.
- Boat or rescuing RIB shall call the RC to confirm MOB is recovered.
- Team Support RIB or Boat collects the MOB and repatriates MOB to their Boat.
- If there is an injury, see "Human Injury".

Human Injury

- Boat or Team Support RIB shall call the RC using VHF 72.
- Course Safety Leader(s) and the Team Support RIB should respond and protect the Boat by creating safety zone in the vicinity of Boat.
- The RC may consider the Abandonment of the race: depending on location, nature of the incident.
- Quick and specific appraisal provided to the RC using VHF 72 as soon as practical.
- 2 possible scenarios:
 - Course Safety Leader not involved: the crew member doesn't need any additional medical help. Transfer on the Team Support Boat ashore, as required.
 - Course Safety Leader involved: Additional medical help is required. Transfer ashore, as required. RC coordinates injury response with shore team.

Capsizing

- Boat, Umpire or the Team Support RIB shall call the RC using VHF 72.
- Course Safety Leader(s) and the Team Support RIB should respond and then protect Boat by creating safety zone in the vicinity of Boat.
- The RC may consider the Abandonment of the race: depending on location, nature of the incident.
- Quick and specific appraisal provided to the RC using VHF 72, as soon as practical.
- Separate VHF channel 77 to be used to coordinate recovery.

Capsizing with crew trapped/injured

- Boat, Umpire or the Team Support RIB shall call the RC using VHF 72.
- Course Safety Leader(s) and the Team Support RIB should respond and then protect Boat by creating safety zone in the vicinity of Boat.
- Course Safety Leader Diver or Team Diver responds.
- The RC may consider the Abandonment of the race: depending on location, nature of the incident.
- Quick and specific appraisal provided to the RC using VHF 72, as soon as practical.
 - How many people?
 - Guest or Crew?
 - A diver in action?
- If there is an injury, see “Human Injury”.
- RC coordinates further resources and actions, as appropriate.

Cont....

Capsizing with crew trapped/injured

Types of Injuries.

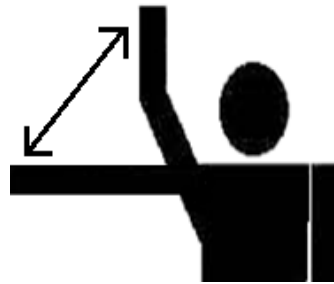
- Priority One – Life-threatening injuries. Call for help, create a free airway, stop bleeding, start CPR.
- Priority Two – Need immediate care.
- Priority Three - Able to wait for help after the race is finished.

Visual Hand Signals to be used.

- OK



- HELP

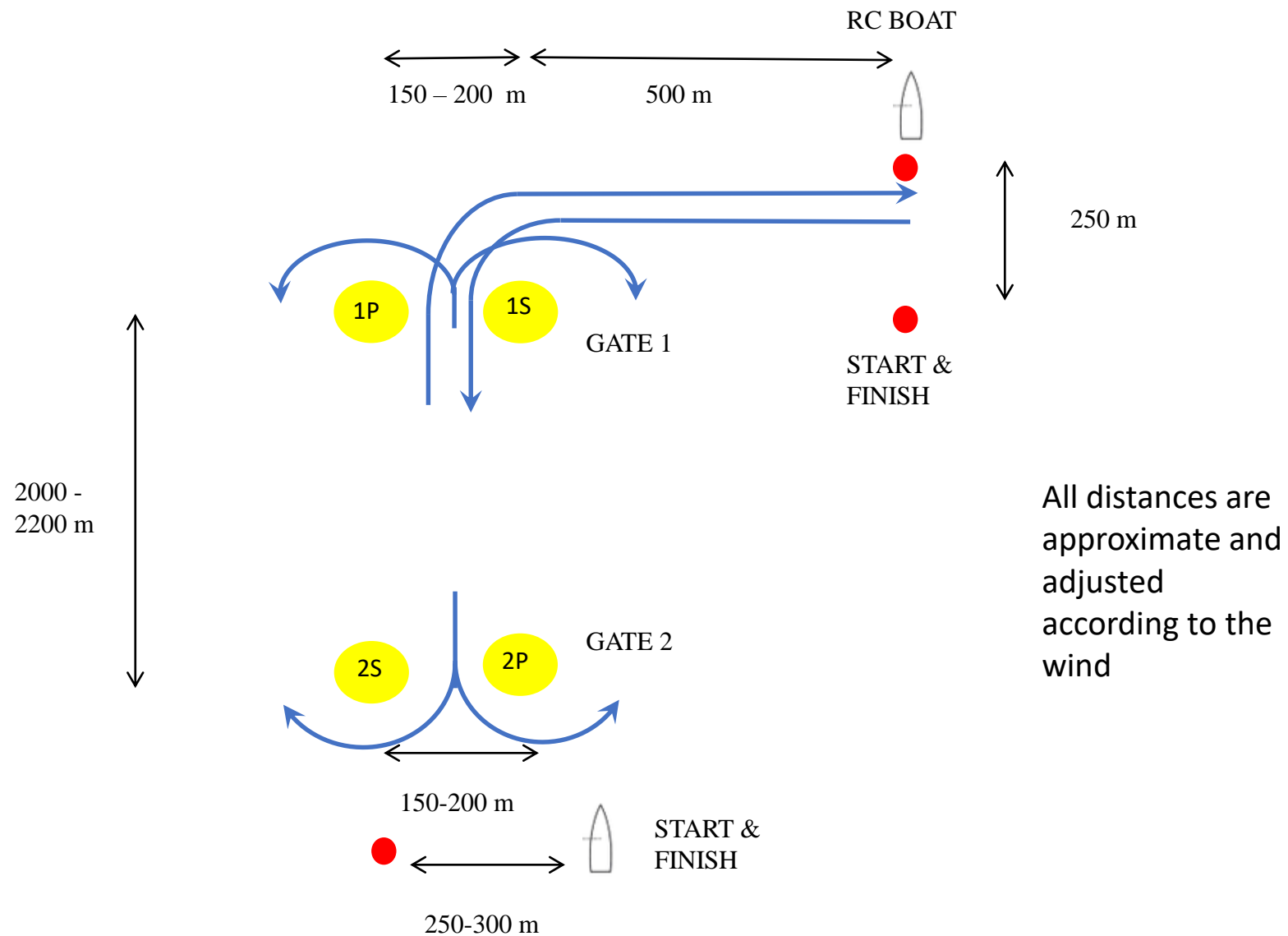


RACE COURSE SAFETY
GC32 WORLD
CHAMPIONSHIP 2018

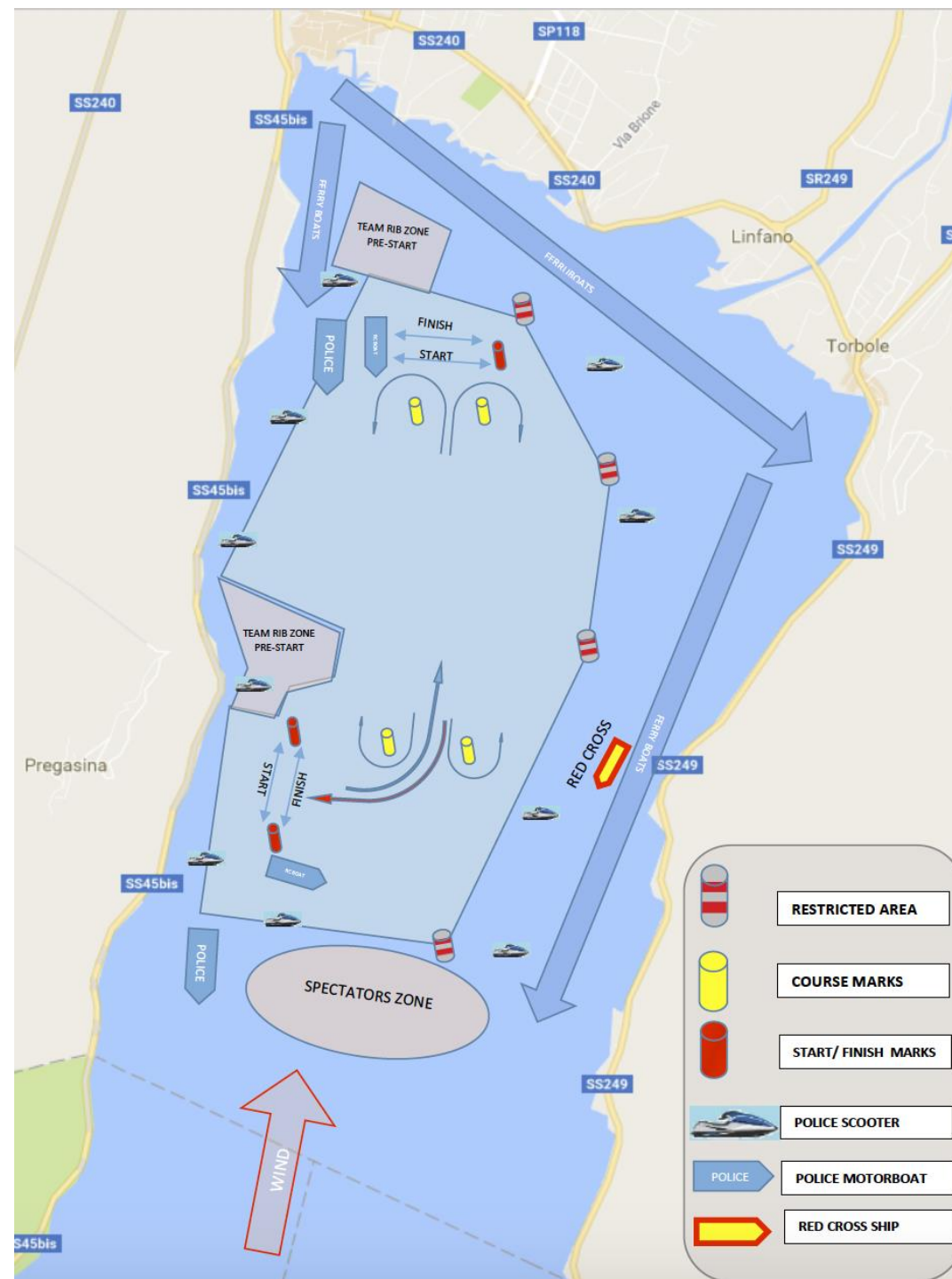


**WORLD
CHAMPIONSHIP
RIVA DEL GARDA 2018**

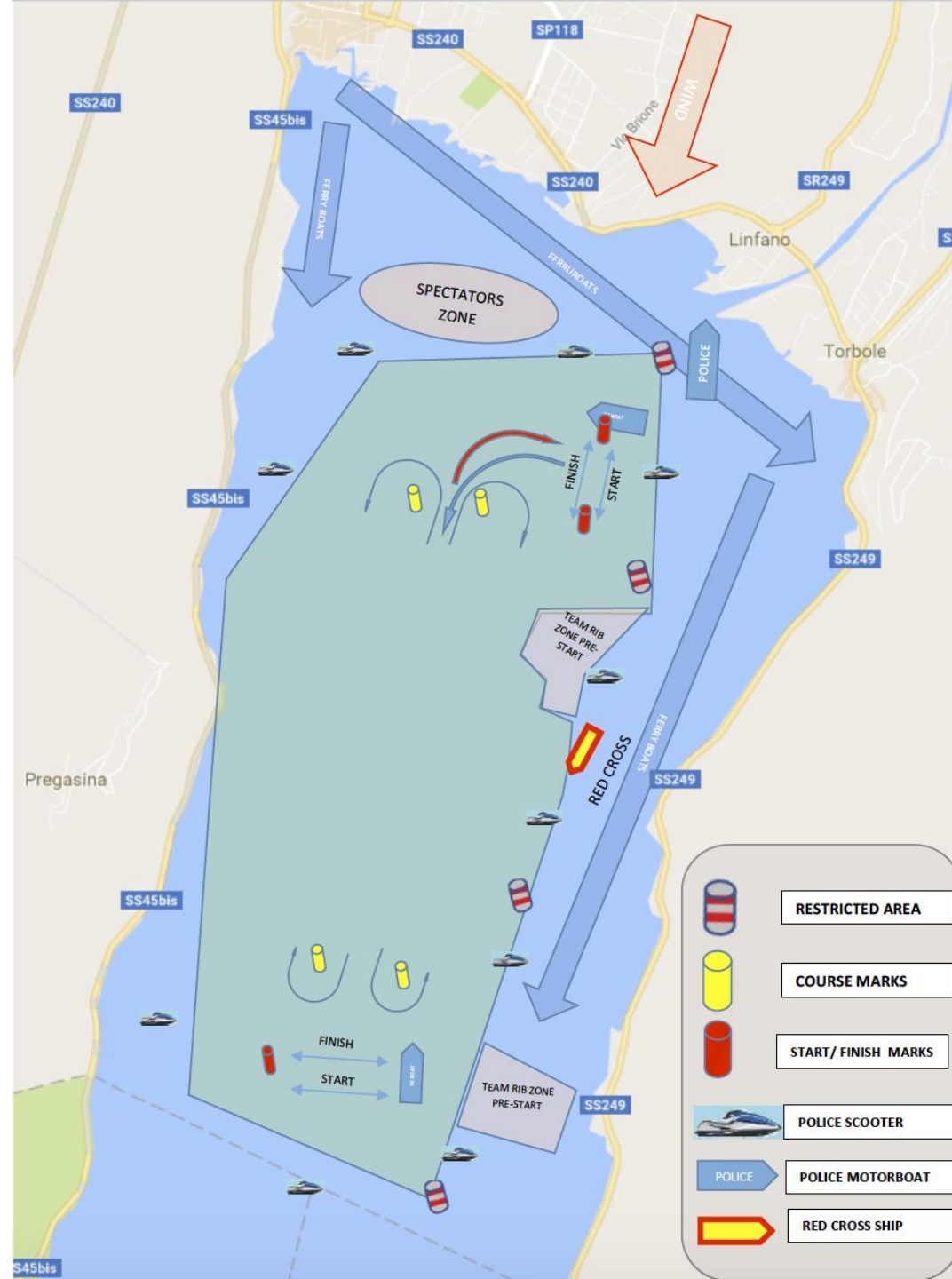
GC32 Standard Race Course Sizes and Measurements



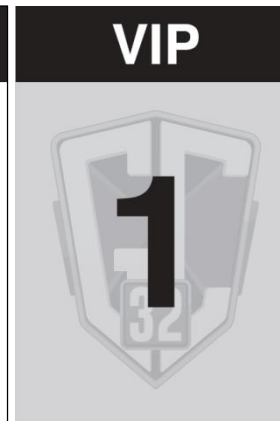
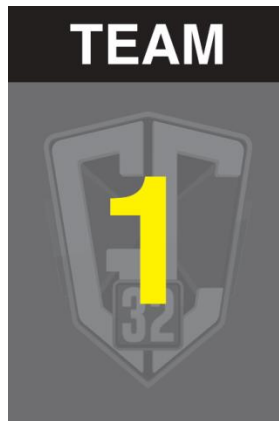
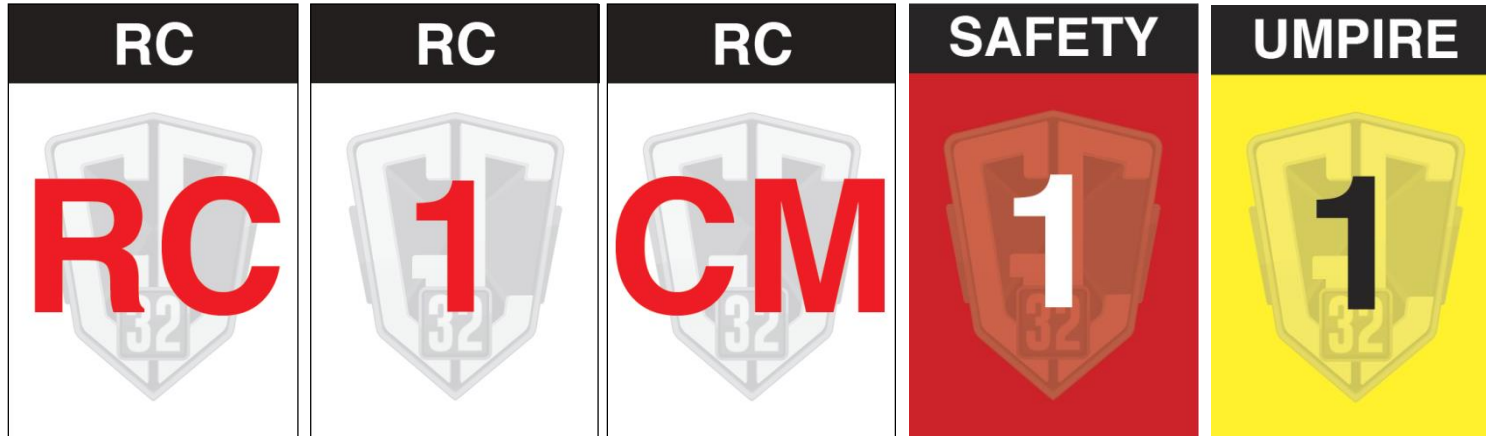
Restricted Area GC32 World Championship South Wind / Ora



Restricted Area GC32 World Championship North Wind / Pelèr



Flags on Boats allowed in the Restricted Race Course Area



Boats that are allowed in Restricted Race Course Area

Only the following boats are allowed in the area during racing:

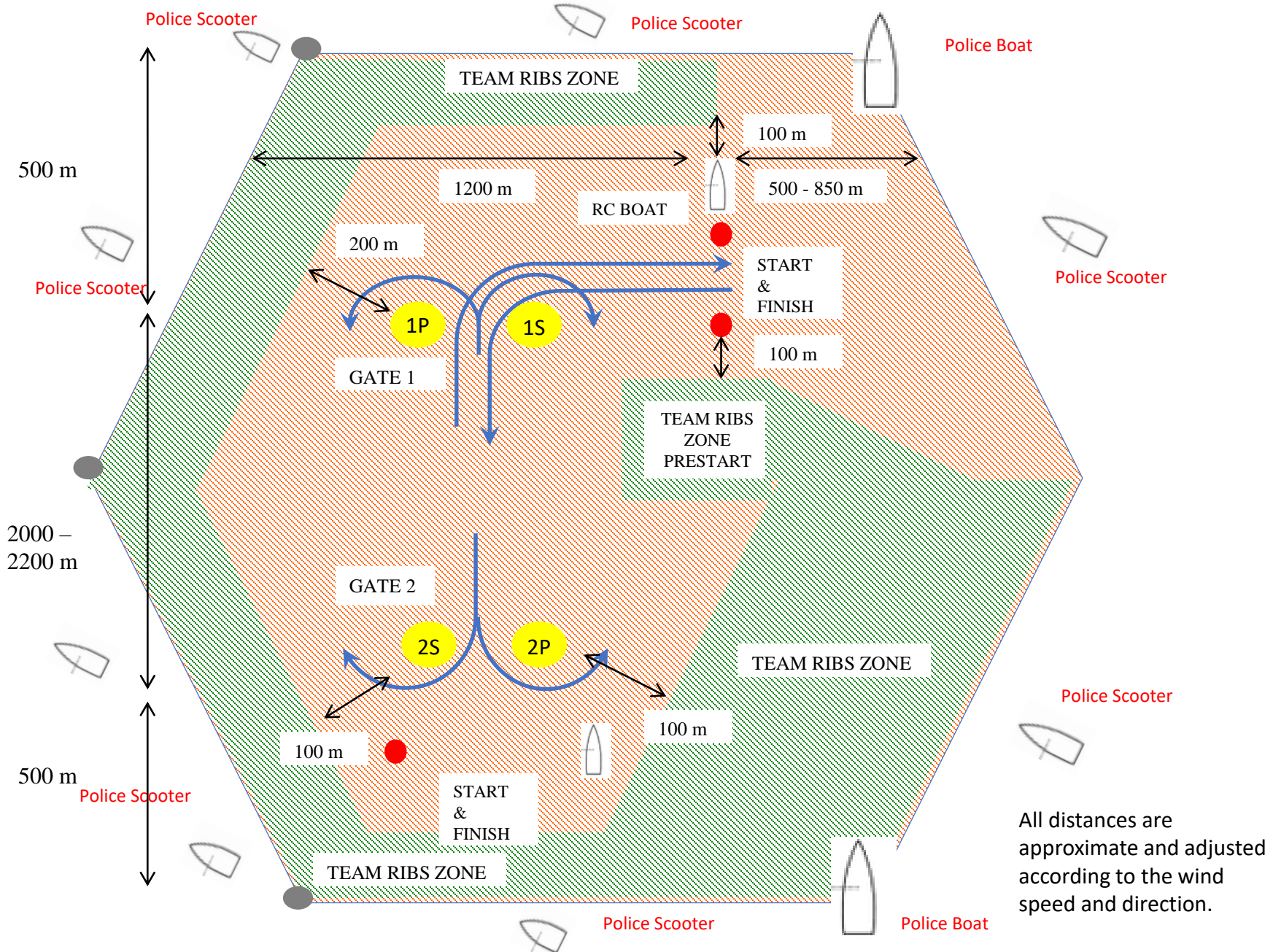
- Race committee boat (1) / RC flag
- Umpires RIB / Jury flags n° 1 - 4
- Safety Leader RIB (2) / Safety flag n° 1 - 2
- Marks layers RIB (4) / RC flags n° 1 – 4 (Shall stay clear of all boats racing and only intervene if absolutely necessary)
- Official GC32 video RIB (1) / Press flag n° 1 (Shall stay clear of all boats racing)
- Official GC32 press RIB (1) / Press flag n° 2 (Shall stay clear of all boats racing)
- GC32 Class Manager (1) / GC32 CM flag

All RIB drivers need to be approved and instructed by the GC32 Class. Personal floatation devices and kill cords must be worn at all times by the RIB drivers.

The following boats are allowed in the green zone only during racing:

- Team RIB (13) / Team flags n° 1 – 13
- VIP ribs / VIP flags
- Official GC32 press RIB (1) / Press flag n° 3

GC32 Restricted Race Course Area



GC32 RT 2017